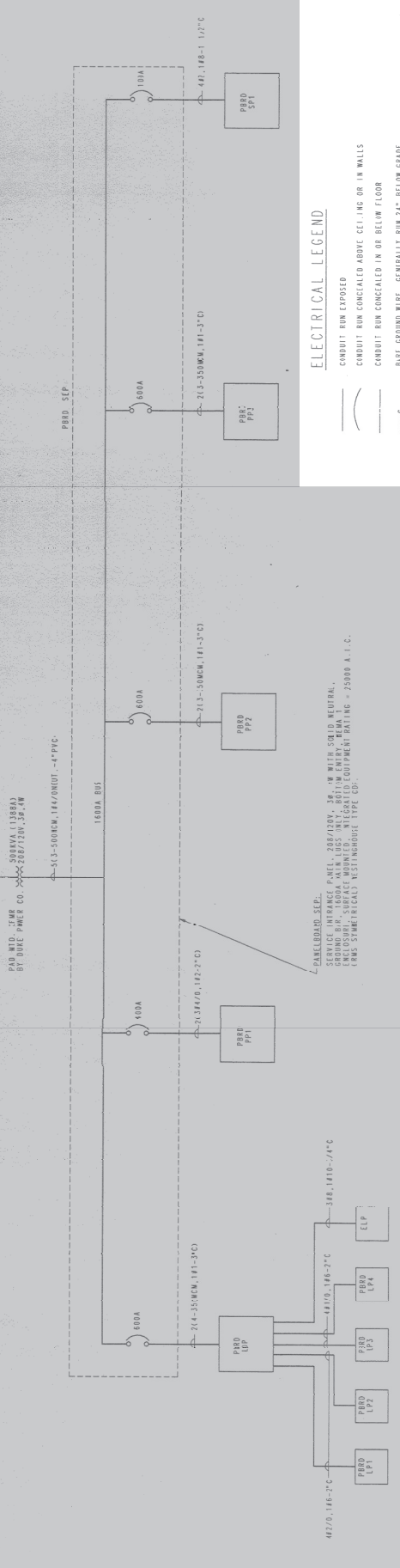


NOTE: DESIGN IS BASED ON ASSUMPTION OF MAXIMUM AVAILABLE FAULT CURRENT OF 25,000 AMPERES (RMS SYMMETRICAL) AT SECONDARY OF DUKE POWER'S TRANSFORMER.



ELECTRICAL LEGEND

- CONDUIT RUN EXPOSED
- CONDUIT RUN CONCEALED ABOVE CEILING OR IN WALLS
- CONDUIT RUN CONCEALED IN OR BELOW FLOOR
- BARE GROUND WIRE, GENERALLY RUN 24" BELOW GRADE
- CONDUIT RUN UNDERGROUND
- CONDUIT TURNING UP OR TOWARD OBSERVER
- CONDUIT TURNING DOWN OR AWAY FROM OBSERVER
- LIGHTING PANELBOARD "LP" OR "LPI"
- DISTRIBUTION PANELBOARD "SEP" OR "SPT"
- PAPER PANELBOARD "PP"
- DIPLEX NEMA 5-20 RECEPTACLE ("R") DENOTES WEATHERPROOF COVER, OTHERS DENOTES STANDARD WEATHERPROOF COVER, "GF" DENOTES GROUNDING RECEPTACLE ABOVE COUNTER TOP, "GF" DENOTES GROUNDING RECEPTACLE BELOW COUNTER TOP.
- SWITCH NEMA 5-20 RECEPTACLE ("R") DENOTES ELECTRIC WATER COOLER, 5-20 RECEPTACLE ("R") DENOTES SPECIAL PURPOSE RECEPTACLE OF NUMA TYPE INDICATED, "R".
- 2" x 4" x 4" UNLESS NOTED OTHERWISE.
- EXHAUST FAN
- WATER HEATER
- MISCELLANEOUS OUTLET BOX (4" SQUARE OR OCTAGON X 2 1/8" DIA.) WITH COVER.
- DOUBLE CONNECTION TO A SPECIFIC PIECE OF EQUIPMENT
- TELEPHONE TERMINAL BOARD, 4" x 8" x 3/4" PLYWOOD.
- TELEPHONE OUTLET, 18" x 4" x 4" UNLESS NOTED OTHERWISE.
- SWITCH, SINGLE POLE, SINGLE THROW, 20 AMP., SPEC. GRADE LETTER DENOTES SWITCHING GROUP
- 3-WAY SWITCH, 20 AMP., SPEC. GRADE
- SWITCH WITH TRIPPER, SPEC. PLAN 906, FOR SPECIFICATION
- RECESSER, SURFACE OR PENDANT MID-FIXTURE, THE FIRST NUMBER DENOTES THE PANELBOARD SERVING THE FIXTURE AND THE SECOND NUMBER DENOTES SWITCH CIRCUIT NUMBER (ELEVATION WITH 4-DIGIT AND 4-DIGIT INDICATING LIGHTING SWITCHING FIXTURE).
- FLUORESCENT STRIP FIXTURE, NOTATION SAME AS ABOVE.
- RECESSER OR PENDANT MID-FIXTURE, NOTATION SAME AS ABOVE.
- WALL MOUNTED INCANDESCENT FIXTURE, NOTATION SAME AS ABOVE.
- EXIT FIXTURE, UNIVERSAL MOUNTED, INSTALLED IN RECREATIONAL AREAS IS REQUIRED, NOTATION SAME AS ABOVE.
- IMMEDIATE DETECTOR, NUMBER INDICATES ZONE
- HEAT DETECTOR, NOTATION SAME AS ABOVE.
- HAC DUCT SMOKE DETECTOR, FURNISHED WITH IC UNIT, NOTATION SAME AS ABOVE.
- FIRE ALARM HORN
- MANUAL FIRE ALARM STATION
- FIRE ALARM CONTROL PANEL
- PASSIVE INFRARED INTRUSION DETECTOR
- EXTERIOR KEY SWITCH FOR SECURITY SYSTEM
- DISCONNECT SWITCH, 60 AMPERE WITH 35 AMPERE FUSES
- PLUGBOARD, 100A CIR. RECEPTACLES ON 2-1/2" CENTERS

DISCONNECT SCHEDULE

EQUIPMENT DESIGNATION	DISCONNECT TYPE	NO. DISCONNECTS	SWITCH RATING (AMP)	ENCLOSURE SIZE (TYPE/INCH)
AC-1	F.S.	1	60	J.R. 1
AC-2	F.S.	1	60	J.R. 1
AC-3	F.S.	1	60	J.R. 1
AC-4	F.S.	1	200	J.R. 1
AC-5	F.S.	2	60	J.R. 1
AC-6	F.S.	1	60	J.R. 1
AC-7	F.S.	1	30	J.R. 1
AC-8	F.S.	1	60	J.R. 1
AC-9	F.S.	1	30	J.R. 1
AC-10	F.S.	1	60	J.R. 3R
CB-1	F.S.	1	60	J.R. 3R
CB-2	F.S.	1	60	J.R. 3R
CB-3	F.S.	1	60	J.R. 3R
CB-4	F.S.	2	60	J.R. 3R
CB-5	F.S.	1	100	J.R. 3R
CB-6	F.S.	1	60	J.R. 3R
CB-7	F.S.	1	60	J.R. 3R
CB-8	F.S.	1	60	J.R. 3R
CH-9	F.S.	1	100	J.R. 3R
FF-1	F.W.E.	1	20	J.R. 1
FF-2	F.W.E.	1	20	J.R. 1
FF-3	F.W.E.	1	20	J.R. 1
FF-4	F.W.E.	1	20	J.R. 1
FF-5	F.W.E.	1	20	J.R. 1
FF-6	F.W.E.	1	20	J.R. 1
FF-7	F.W.E.	1	20	J.R. 1
FF-8	F.W.E.	1	20	J.R. 1
FF-9	F.W.E.	1	20	J.R. 1
FF-10	F.W.E.	1	20	J.R. 1
FF-11	F.W.E.	1	20	J.R. 1
DDCT	F.W.E.	1	400	F.W.E. 1
HEATER	F.W.E.	1	200	J.R. 1
ELEVATOR	N.F.S.	1	200	J.R. 1

A.R. = AS REQUIRED, SELECT PER EQUIPMENT NAMEPLATE
 F.S. = FUSIBLE SWITCH
 F.W.E. = FURNISHED WITH EQUIPMENT
 N.F.S. = NON-FUSIBLE SWITCH
 PROVIDE PROPER DISCONNECTING MEANS, AS SCHEDULED, FOR ALL EQUIPMENT LISTED ABOVE.

PROJECT NO.	18000
DATE	01/06/23
REVISION	
BY	
CHECKED BY	
DATE	

LED LIGHTING RETROFIT PROGRAM
 ROOPER MOUNTAIN SCIENCE CENTER - SYMMES HALL AND
 WILKINS CONFERENCE CENTER
 THE SCHOOL DISTRICT OF GREENVILLE COUNTY

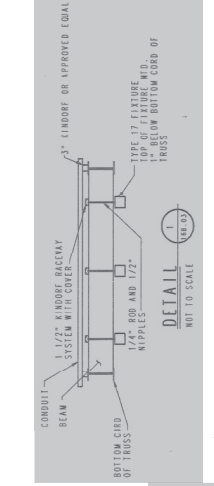
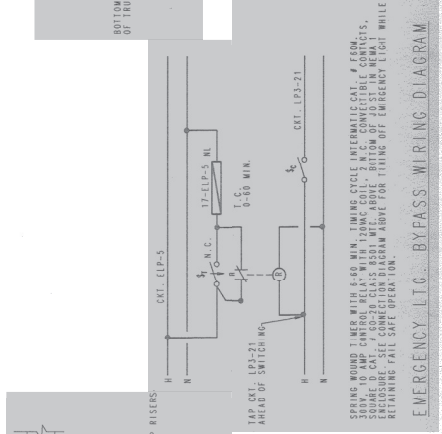
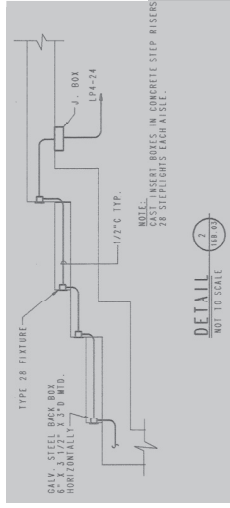
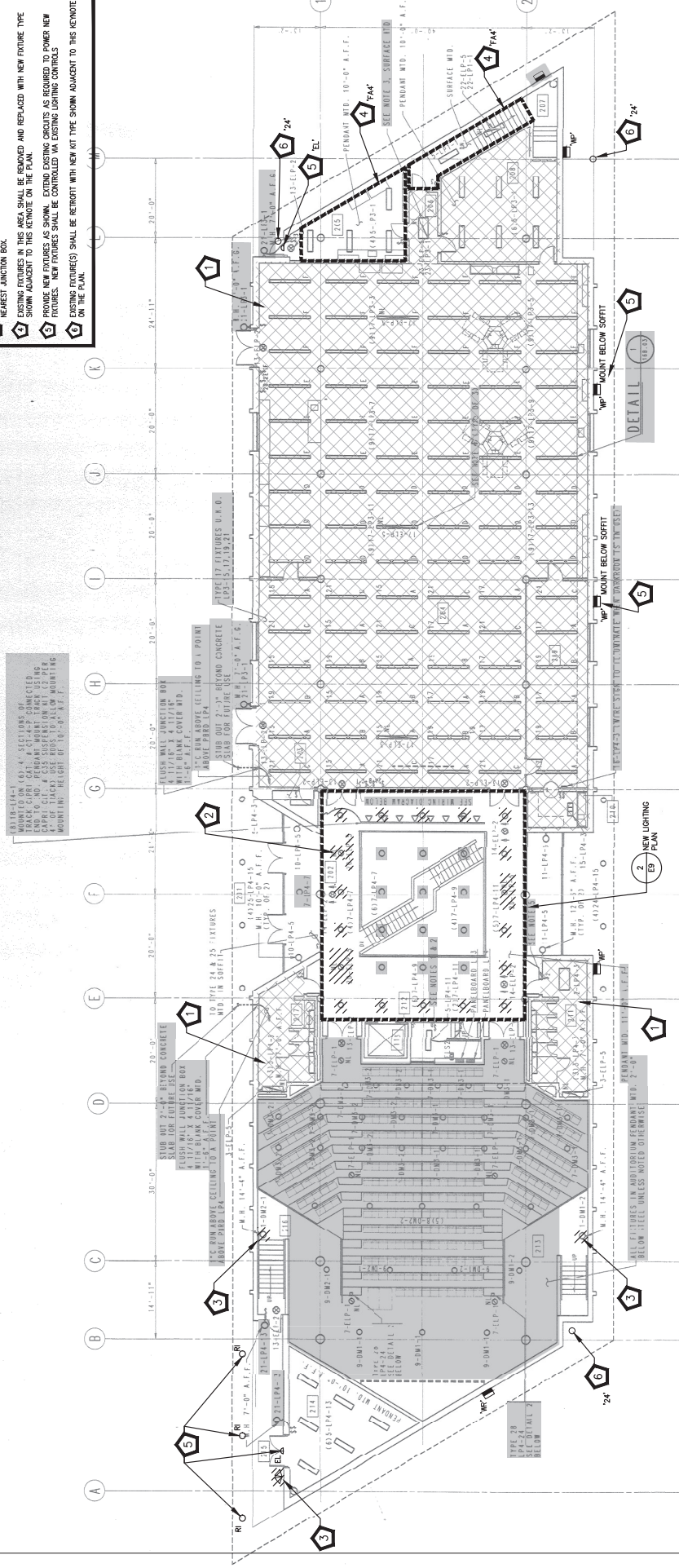
ELECTRICAL LEGEND AND SINGLE LINE

PROJECT NO.	121700
DATE	01/26/23
DESIGNER	PKM
CHECKED BY	PKM
DATE	01/26/23
PROJECT NO.	121700
DATE	01/26/23
DESIGNER	PKM
CHECKED BY	PKM
DATE	01/26/23
PROJECT NO.	121700
DATE	01/26/23
DESIGNER	PKM
CHECKED BY	PKM
DATE	01/26/23

LED LIGHTING RETROFIT PROGRAM
ROPER MOUNTAIN SCIENCE CENTER - SYMMES HALL AND
WILKINS CONFERENCE CENTER
THE SCHOOL DISTRICT OF GREENVILLE COUNTY

- RECALL NOTES:**
- 1. THIS CROSS-HATCHED AREA DOES NOT ACCURATELY REFLECT EXISTING CONDITIONS. SEE DRAWINGS TO THE LEFT FOR UPDATED PLANS OF THIS AREA.
 - 2. EXISTING FIXTURES IN THIS AREA SHOWN HATCHED SHALL BE REMOVED. EXISTING CIRCUITS AND WIRING SHALL REMAIN FOR NEW FIXTURES TO BE INSTALLED IN THIS AREA.
 - 3. EXISTING FIXTURE(S) SHOWN HATCHED SHALL BE REMOVED. REMOVE ASSOCIATED CIRCUIT BACK TO NEAREST JUNCTION BOX.
 - 4. EXISTING FIXTURES IN THIS AREA SHALL BE REMOVED AND REPLACED WITH NEW FIXTURE TYPE SHOWN ADJACENT TO THIS KEYNOTE ON THE PLAN.
 - 5. PROVIDE NEW FIXTURES AS SHOWN. EXTEND EXISTING CIRCUITS AS REQUIRED TO POWER NEW FIXTURES. NEW FIXTURES SHALL BE CONTROLLED VIA EXISTING LIGHTING CONTROLS.
 - 6. EXISTING FIXTURE(S) SHALL BE RETROFIT WITH NEW FIT TYPE SHOWN ADJACENT TO THIS KEYNOTE ON THE PLAN.

0118-114-1
MOUNTED ON (6) 4" SECTIONS OF CONCRETE
END TO END. PENDANT MOUNT TRACK USING
4" x 4" TRACKS. SEE NOTES TO ALLOW MOUNTING
HEIGHT OF 10'-0" A.F.F.



- NOTES:**
- SEE DRG. 168-01 FOR AUDITORIUM LIGHTING DIMMING SYSTEM
 - CONDUIT INTERFACED AT STORAGE ROOMS ACCESS TO MULTI-STATION
 - FIXTURE EQUIPPED WITH TWO SINGLE LAMP BALLASTS. WIRE ONE LAMP BALLAST TO L.P. CIRCUIT NOTED. (TYP. FOR TYPE 22 & 23 FIXTURES)
 - WIRE BALLAST WIRING TO LAMP WIRING TO LAMP CIRCUIT NOTED.
 - DOUBLE POLE SINGLE THROW SWITCH, USE ONE POLE FOR EACH LAMP. (TYP. FOR TYPE 22 & 23 FIXTURES)
 - FOR E.P.-3 & E.P.-4 ON HVAC DRAWINGS, COMMENCE MANNER. SEE INSTALLATION SPECIFICATION 1020.3.1.
 - FIRE RATED WALL PENETRATIONS TO BE SEALED WITH FIRE STOP.
 - WATERPROOF EXTERIOR WALL PENETRATIONS WITH EFFECTIVE SEALER.

SPRING WOUND TIMER WITH 6-60 MIN. TIMING CYCLE INTERMEDIATE CAT. # FERM. 2000-10 AMP CONTROL RELAY WITH 120VAC COIL - 2 M.C. CONNECTIBLE CIRCUITS. ENCLOSURE - SEE CONNECTION DIAGRAM ABOVE FOR TYPING OFF EMERGENCY LIGHT WHILE RETAINING FAIL SAFE OPERATION.

EMERGENCY L.T.C. BYPASS WIRING DIAGRAM.